

Commercial Development Site For Sale

Purchase Price : \$74,900

Location : Pilchard Street, New Port Richey,
Pasco County, FL

Land Size : .46 Acres ±

Dimensions : irregular shape, 160' of frontage ±

Zoning/ Land use : C-2 / Res-9

Taxes : \$251 for 2008

Comments

Currently zoned commercial with Res-9 land use, may require land use change and / or annex to City of New Port Richey.

For all inquires please contact:
Charles R Grey

The information given herewith is obtained from sources we consider reliable. We are not responsible for misstatements of facts, errors, omissions, changes in terms or conditions, or withdrawal from the market without prior notice.

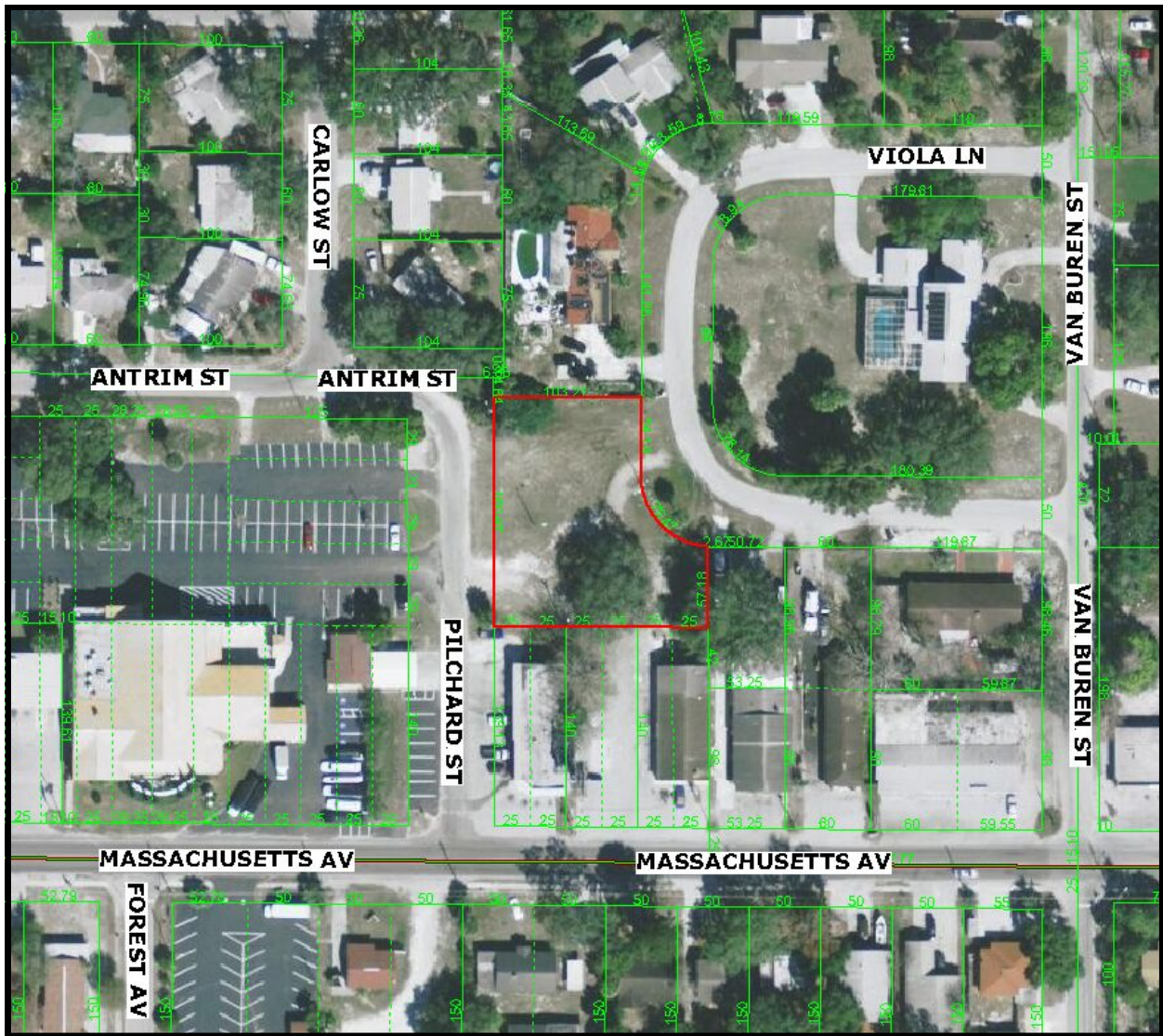


6328 US Hwy 19
New Port Richey
Florida 34652

Established 1924

727-849-2424 office * 727-842-6596 fax * www.figrey.com

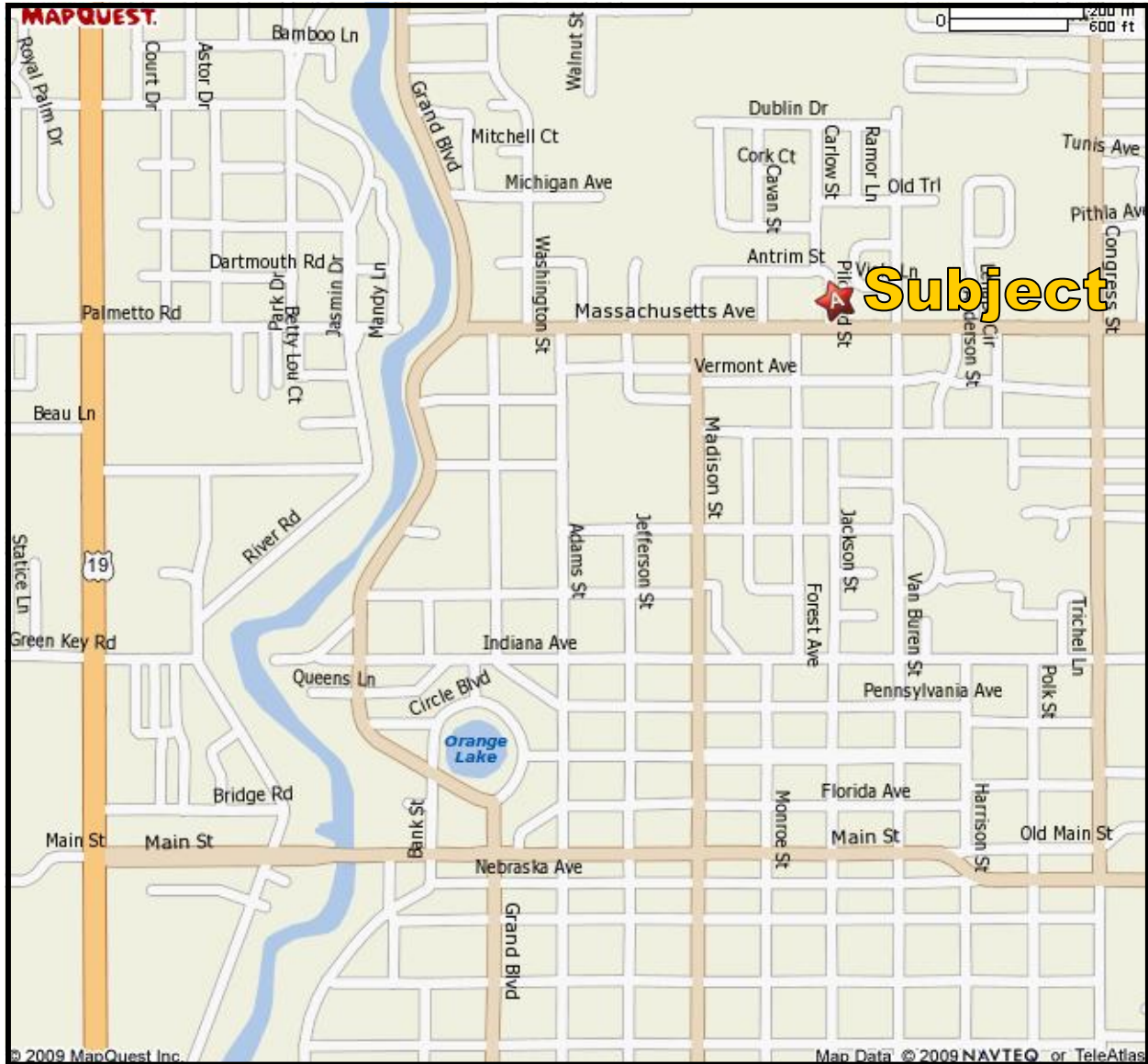
Aerial Map



Please note that the red border lines are approximate and subject to an accurate survey.

The information given herewith is obtained from sources we consider reliable. We are not responsible for misstatements of facts, errors, omissions, changes in terms or conditions, or withdrawal from the market without prior notice.

Area Map



The information given herewith is obtained from sources we consider reliable. We are not responsible for misstatements of facts, errors, omissions, changes in terms or conditions, or withdrawal from the market without prior notice.