

## Townhome or Condo Development Site For Sale

Purchase Price	:	\$146,900.00
Location	:	6818 Congress Str. & 6516 Kentucky New Port Richey, Pasco County, FL
Land Size	:	.85 Acres±
Dimensions	:	150' x 214' ±
Zoning/ Land Use	:	R2 / Res—6
Zoning Designation for City of New Port Richey	:	MF-10
Taxes	:	\$1,407for 2008

### Comments

Property has gone through initial development stages for building up to Seven townhomes or condos.

Residential area close to shopping, doctors, hospital and downtown New Port Richey.

For all inquires please contact:

**Dennis Gallagher**

(727)514-4232

The information given herewith is obtained from sources we consider reliable. We are not responsible for misstatements of facts, errors, omissions, changes in terms or conditions, or withdrawal from the market without prior notice.



6328 US Hwy 19  
New Port Richey  
Florida 34652

*Established 1924*

727-849-2424 office \* 727-842-6596 fax \* [www.figrey.com](http://www.figrey.com)

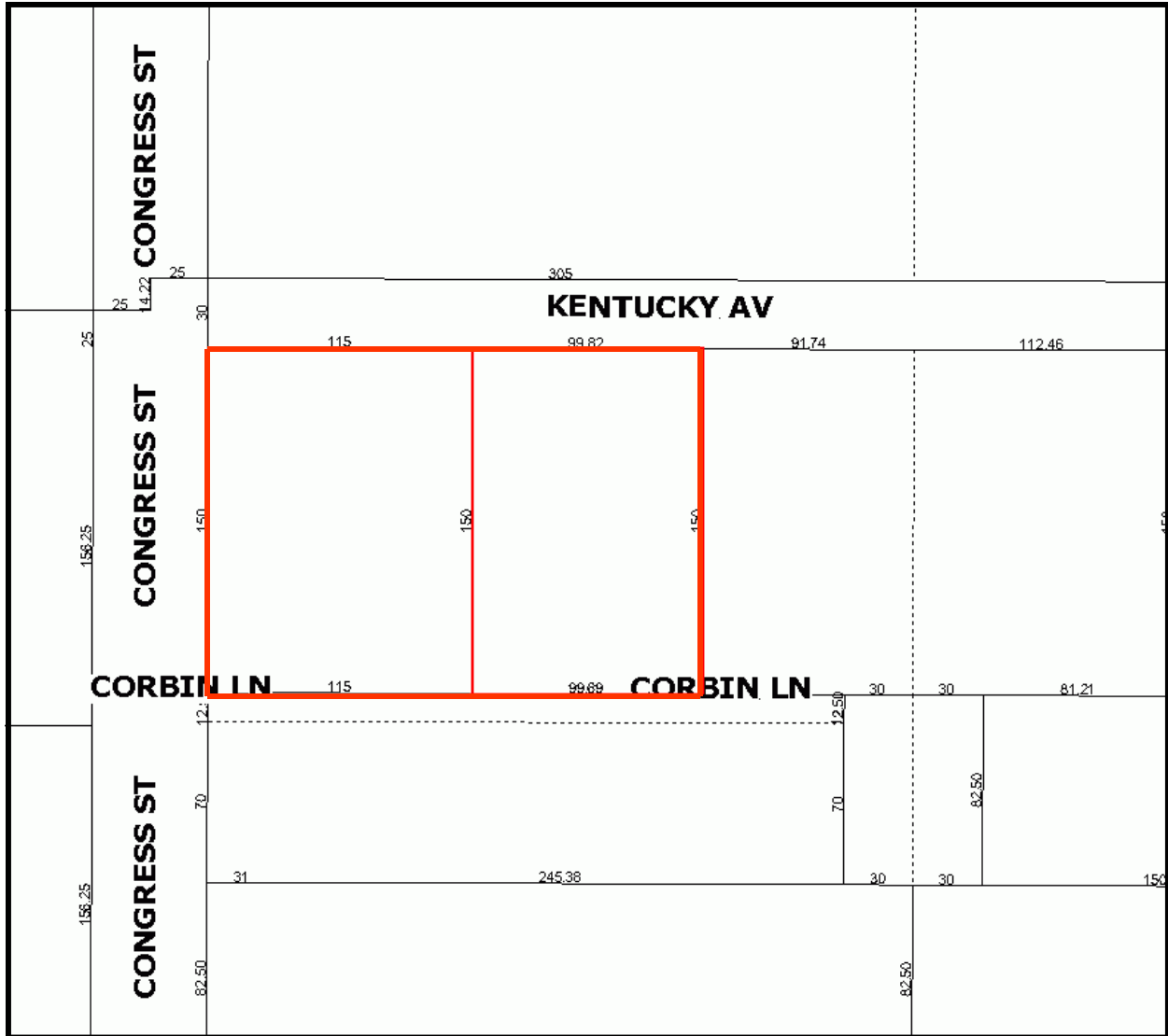
# Aerial Map



Please note that the red border lines are approximate and subject to an accurate survey.

The information given herewith is obtained from sources we consider reliable. We are not responsible for misstatements of facts, errors, omissions, changes in terms or conditions, or withdrawal from the market without prior notice.

# Plat Map



Please note all dimensions are approximate and subject to an accurate survey.

The information given herewith is obtained from sources we consider reliable. We are not responsible for misstatements of facts, errors, omissions, changes in terms or conditions, or withdrawal from the market without prior notice.

# Area Map



The information given herewith is obtained from sources we consider reliable. We are not responsible for misstatements of facts, errors, omissions, changes in terms or conditions, or withdrawal from the market without prior notice.