

Bank Owned For Sale

Purchase Price	:	\$179,000.00
Location	:	7234 Congress and 6515 Char New Port Richey, FL
County	:	Pasco County
Building Size	:	Building 1: 1,600 sq ft ± Building 2: 2,430 sq ft ±
Land Size	:	.24 Acres ±
Dimensions	:	85' x 135' ±
Zoning/ Land use	:	0MF2 = R/OS
Taxes	:	\$2,600 for 2008
Utilities	:	City Utilities Water & Sewer

Comments

Corner Lot, 2 buildings, currently used as furniture store with storage warehouse. Great exposure on busy street. Bank owned. Property will be sold "AS IS".

For all inquires please contact:

Dennis Gallagher

727-514-4232

The information given herewith is obtained from sources we consider reliable. We are not responsible for misstatements of facts, errors, omissions, changes in terms or conditions, or withdrawal from the market without prior notice.

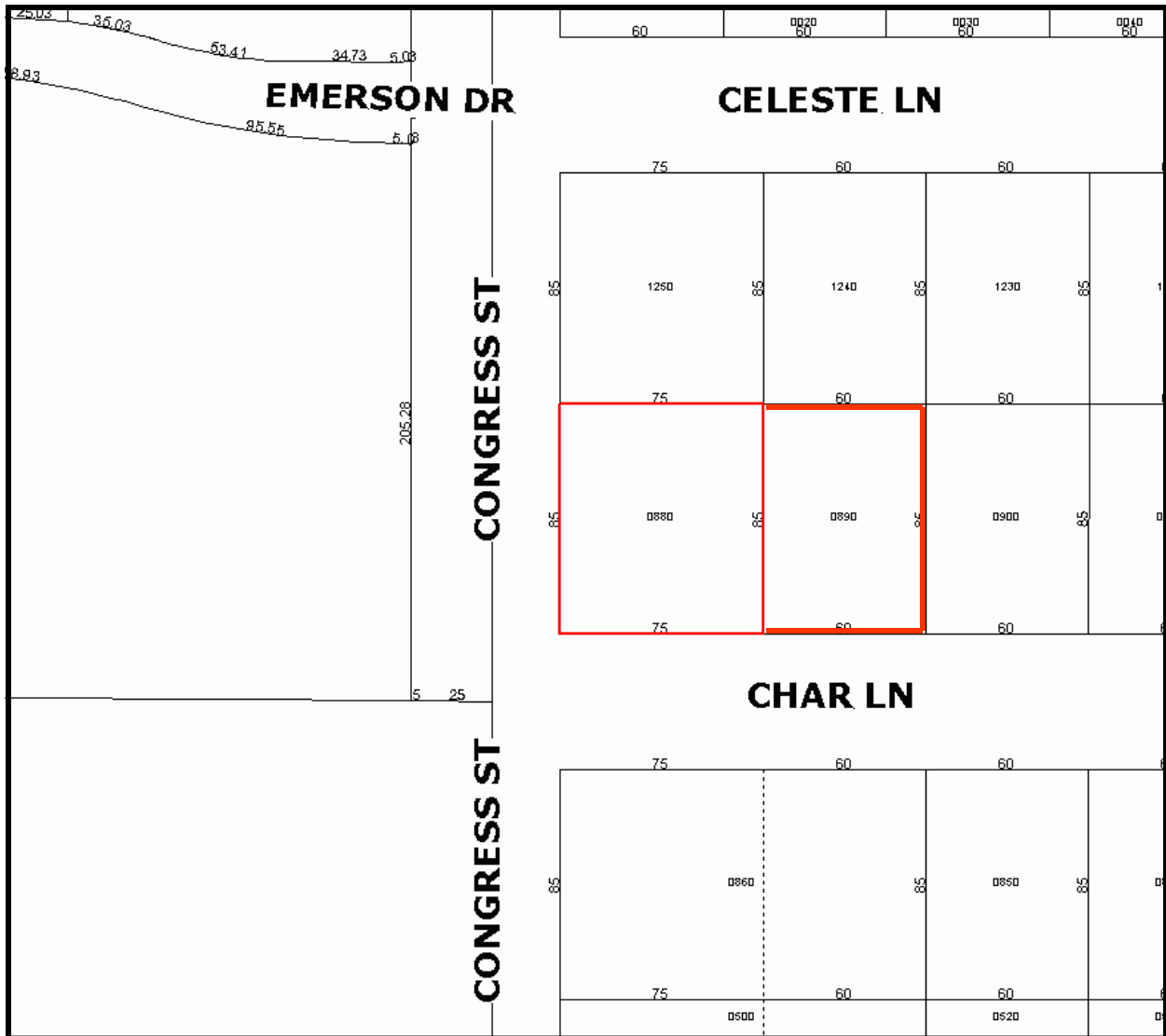


6328 US Hwy 19
New Port Richey
Florida 34652

Established 1924

727-849-2424 office * 727-842-6596 fax * www.figrey.com

Plat Map



Please note all dimensions are approximate and subject to an accurate survey.

The information given herewith is obtained from sources we consider reliable. We are not responsible for misstatements of facts, errors, omissions, changes in terms or conditions, or withdrawal from the market without prior notice.

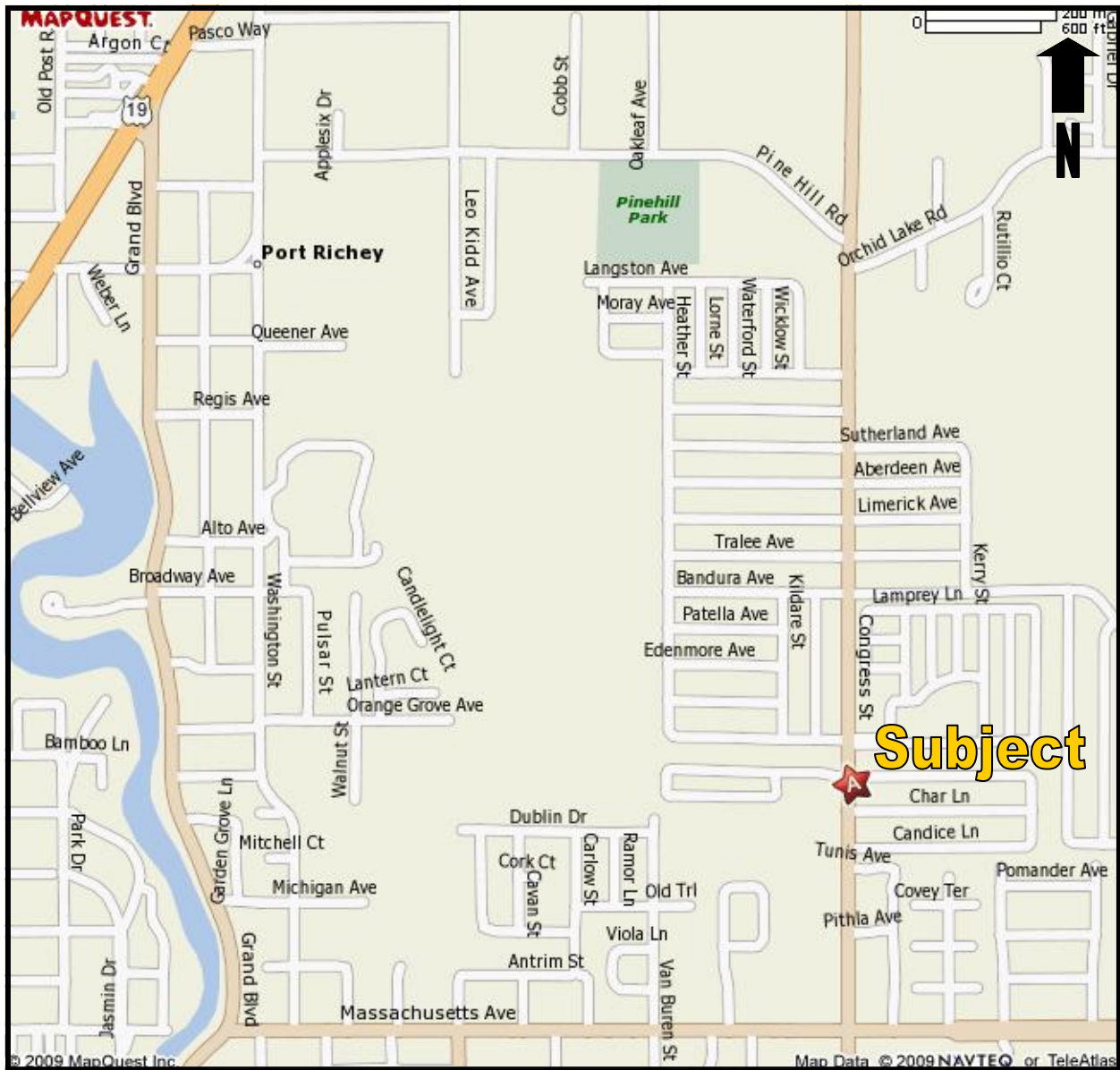


6328 US Hwy 19
New Port Richey
Florida 34652

Established 1924

727-849-2424 office * 727-842-6596 fax * www.figrey.com

Area Map



The information given herewith is obtained from sources we consider reliable. We are not responsible for misstatements of facts, errors, omissions, changes in terms or conditions, or withdrawal from the market without prior notice.



6328 US Hwy 19
New Port Richey
Florida 34652

Established 1924

727-849-2424 office * 727-842-6596 fax * www.figrey.com