

**“Jackie’s Place”**  
**6153 Massachusetts Avenue**

Purchase Price : \$395,000.00

Location : 6153 Massachusetts Avenue.,  
New Port Richey, FL 34653

Land Size : 13,939 Sq Ft (±)

Building Size : 2,880 Sq Ft (±)

Dimensions : 100’ X 140’

Zoning : City of NPR Commercial

Taxes : \$2,458 for 2008

Comments

Charming pub located near the heart of the city of New Port Richey. Has been established for 15 plus years. Building includes fixtures, equipment and liquor license.

For all inquires please contact:

**Charles R. Grey**  
(727)849-2424

The information given herewith is obtained from sources we consider reliable. We are not responsible for misstatements of facts, errors, omissions, changes in terms or conditions, or withdrawal from the market without prior notice.



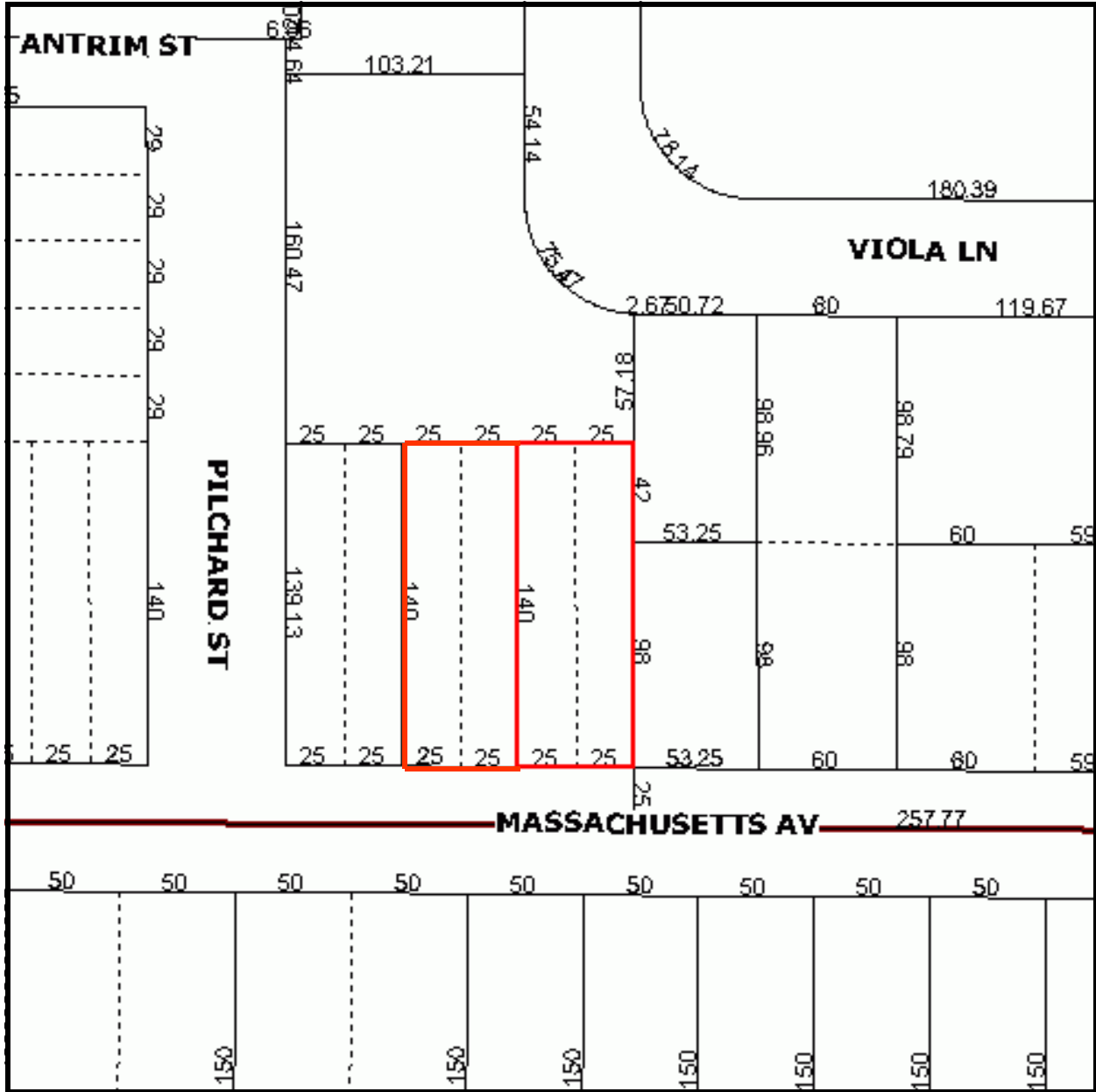
6328 US Hwy 19  
New Port Richey  
Florida 34652

*Established 1924*

727-849-2424 office \* 727-842-6596 fax \* [www.figrey.com](http://www.figrey.com)



# Plat Map



Please note all dimensions are approximate and subject to an accurate survey.

The information given herewith is obtained from sources we consider reliable. We are not responsible for misstatements of facts, errors, omissions, changes in terms or conditions, or withdrawal from the market without prior notice.

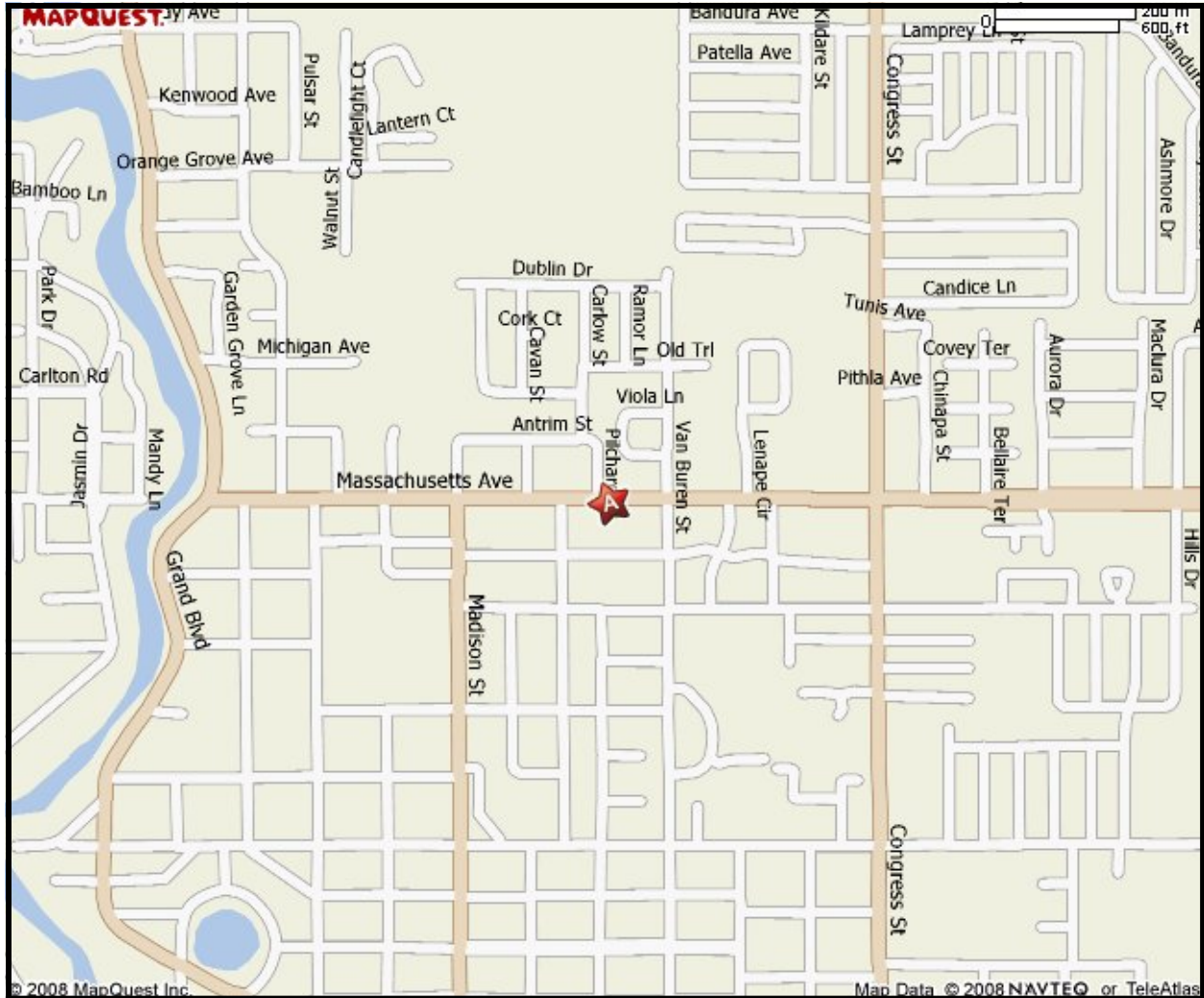


6328 US Hwy 19  
New Port Richey  
Florida 34652

*Established 1924*

727-849-2424 office \* 727-842-6596 fax \* [www.figrey.com](http://www.figrey.com)

# Location Map



The information given herewith is obtained from sources we consider reliable. We are not responsible for misstatements of facts, errors, omissions, changes in terms or conditions, or withdrawal from the market without prior notice.



6328 US Hwy 19  
New Port Richey  
Florida 34652

*Established 1924*

727-849-2424 office \* 727-842-6596 fax \* [www.figrey.com](http://www.figrey.com)