

2.32 Acres Vacant Land Hudson, FL

Purchase Price	:	\$99,000.00
Location	:	Hudson, Avenue, Hudson
Land Size	:	1.23 acres & 1.09 acres (mol)
County	:	Pasco County
Dimensions	:	Irregular Shaped
Zoning/ Land use	:	PUD / RES -6
Taxes	:	\$651 for 2008

Comments

Located in an area dominated by hospital and medical office uses. Also high density residential. Well located and easily identified across from Bayonet Point Regional Medical Center, Hudson, Florida. Would require fill and rezoning for appropriate use.

For all inquires please contact:

Charles R. Grey

(727)849-2424

The information given herewith is obtained from sources we consider reliable. We are not responsible for misstatements of facts, errors, omissions, changes in terms or conditions, or withdrawal from the market without prior notice.

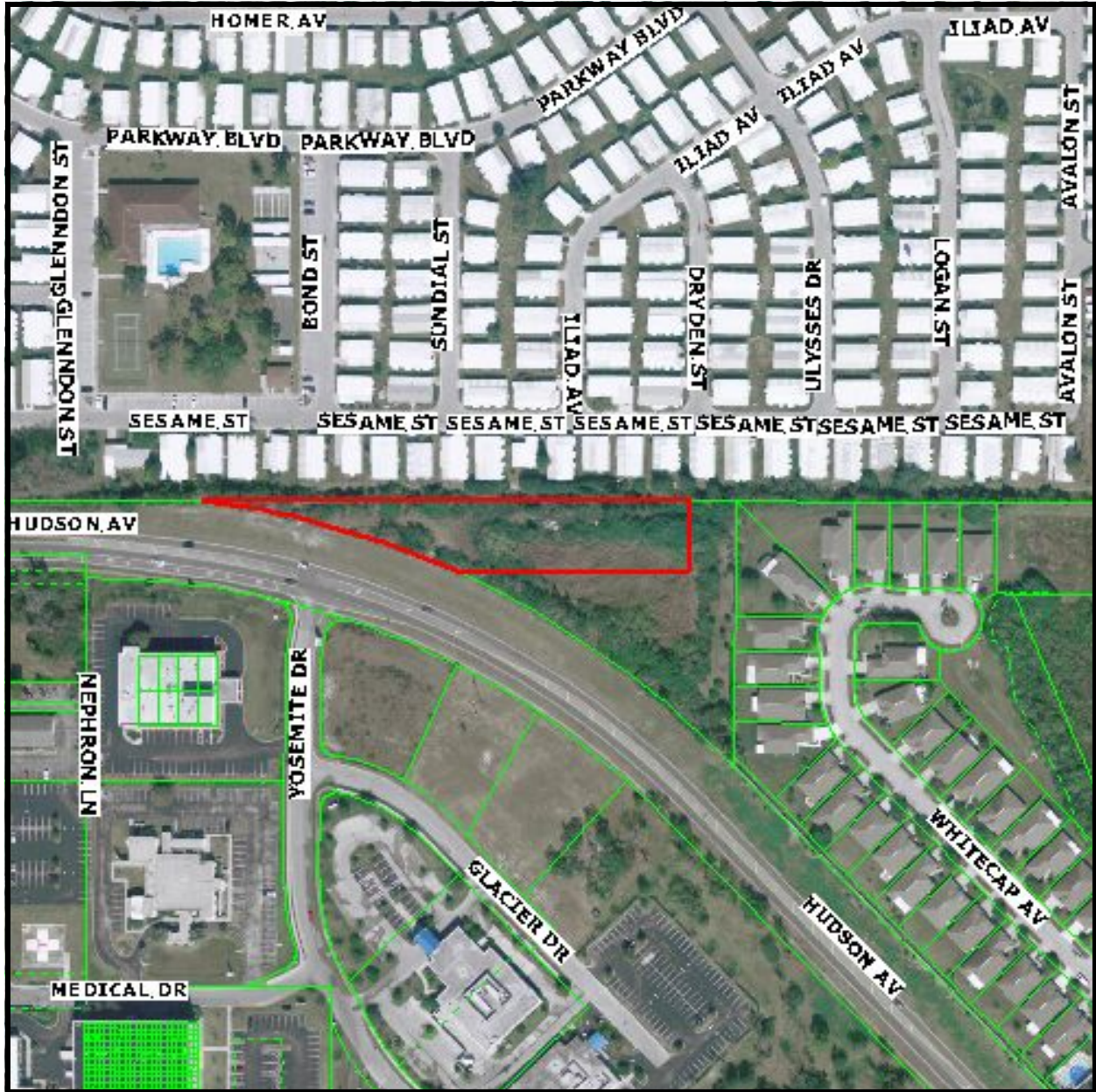


6328 US Hwy 19
New Port Richey
Florida 34652

Established 1924

727-849-2424 office * 727-842-6596 fax * www.figrey.com

Aerial Map



Please note that the red border lines are approximate and subject to an accurate survey.

The information given herewith is obtained from sources we consider reliable. We are not responsible for misstatements of facts, errors, omissions, changes in terms or conditions, or withdrawal from the market without prior notice.

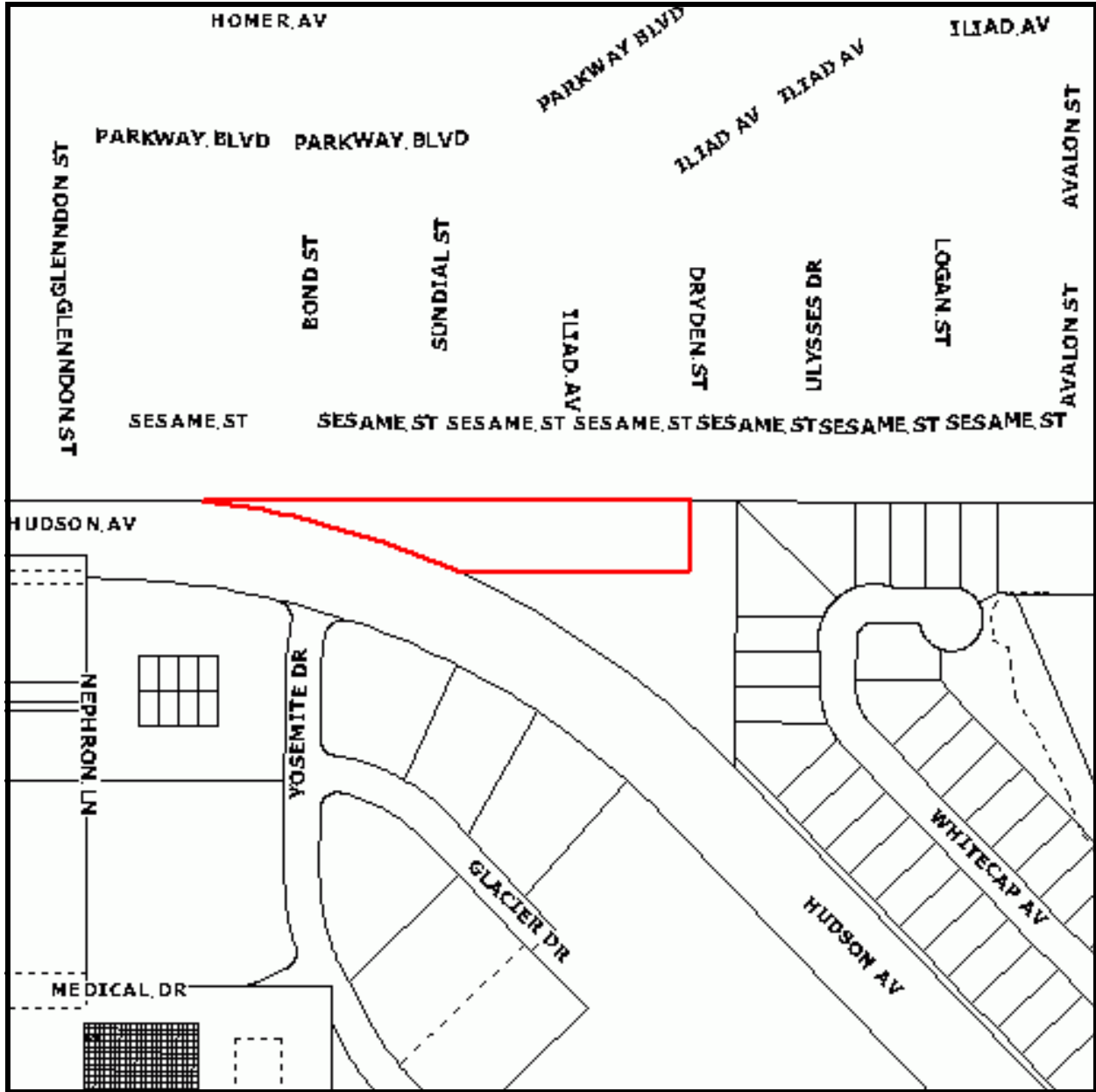


6328 US Hwy 19
New Port Richey
Florida 34652

Established 1924

727-849-2424 office * 727-842-6596 fax * www.figrey.com

Plat Map



Please note all dimensions are approximate and subject to an accurate survey.

The information given herewith is obtained from sources we consider reliable. We are not responsible for misstatements of facts, errors, omissions, changes in terms or conditions, or withdrawal from the market without prior notice.

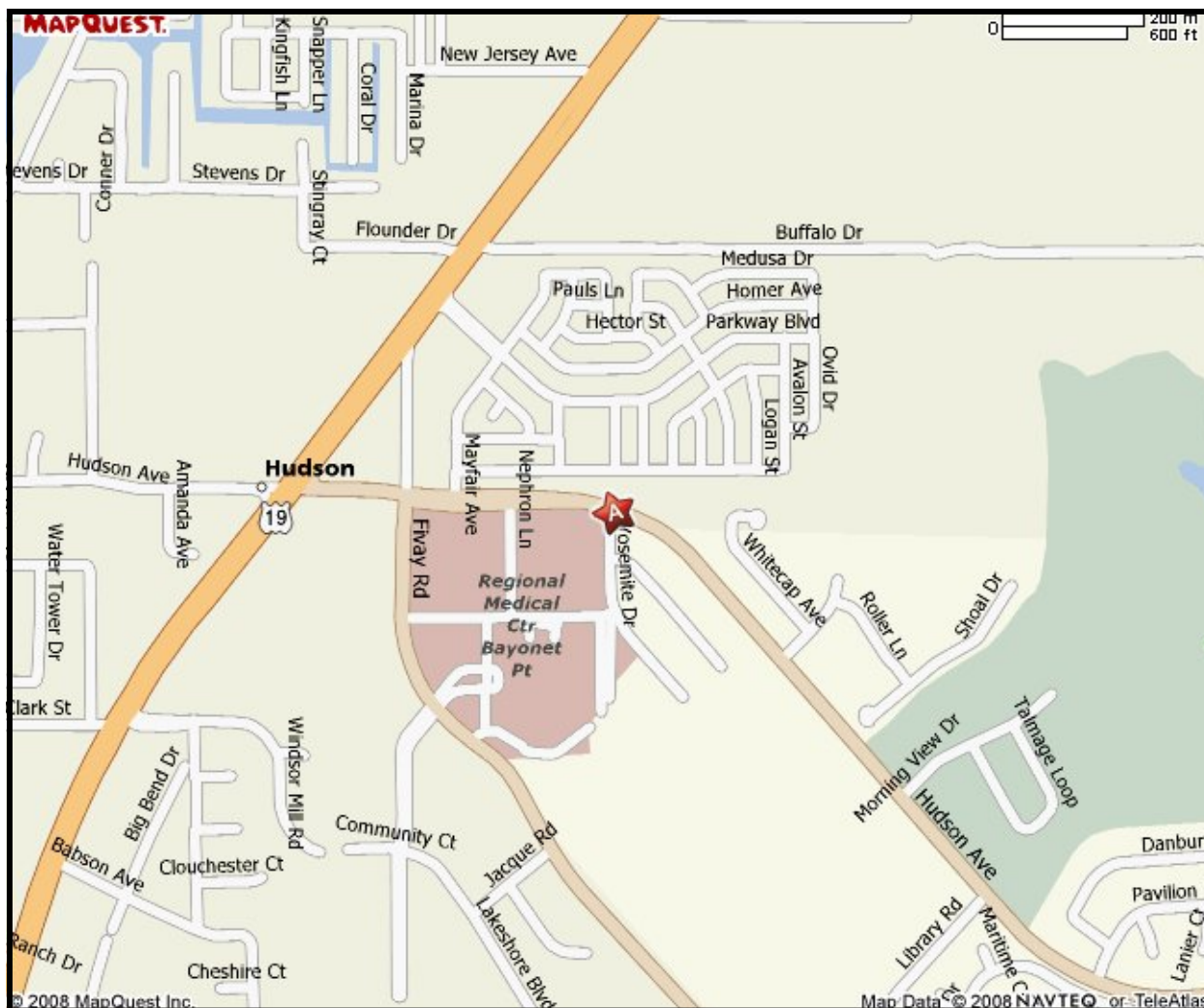


6328 US Hwy 19
New Port Richey
Florida 34652

Established 1924

727-849-2424 office * 727-842-6596 fax * www.figrey.com

Location Map



The information given herewith is obtained from sources we consider reliable. We are not responsible for misstatements of facts, errors, omissions, changes in terms or conditions, or withdrawal from the market without prior notice.



6328 US Hwy 19
New Port Richey
Florida 34652

Established 1924

727-849-2424 office * 727-842-6596 fax * www.figrey.com