

# Great Potential 36.5 Acre Parcel

## Hudson, FL 34667

Purchase Price	:	\$250,000
Location	:	HOUSTON AVENUE HUDSON, FL 34667
Land Size	:	36.5 Acres
Land Dimensions	:	Irregular Shape
Zoning	:	AC
Utilities	:	Water - Hudson Electric - Withlacoochee
Taxes	:	\$1382 FOR 2006

### Comments

36.5 ACRES IN AN AREA OF RAPID GROWTH, GREAT POTENTIAL,  
CLOSE TO MAJOR THOROUGHFARES.

For all inquires please contact:

**Dennis Gallagher**

(727)849-2424 or (727) 514-4232

The information given herewith is obtained from sources we consider reliable. We are not responsible for misstatements of facts, errors, omissions, changes in terms or conditions, or withdrawal from the market without prior notice.

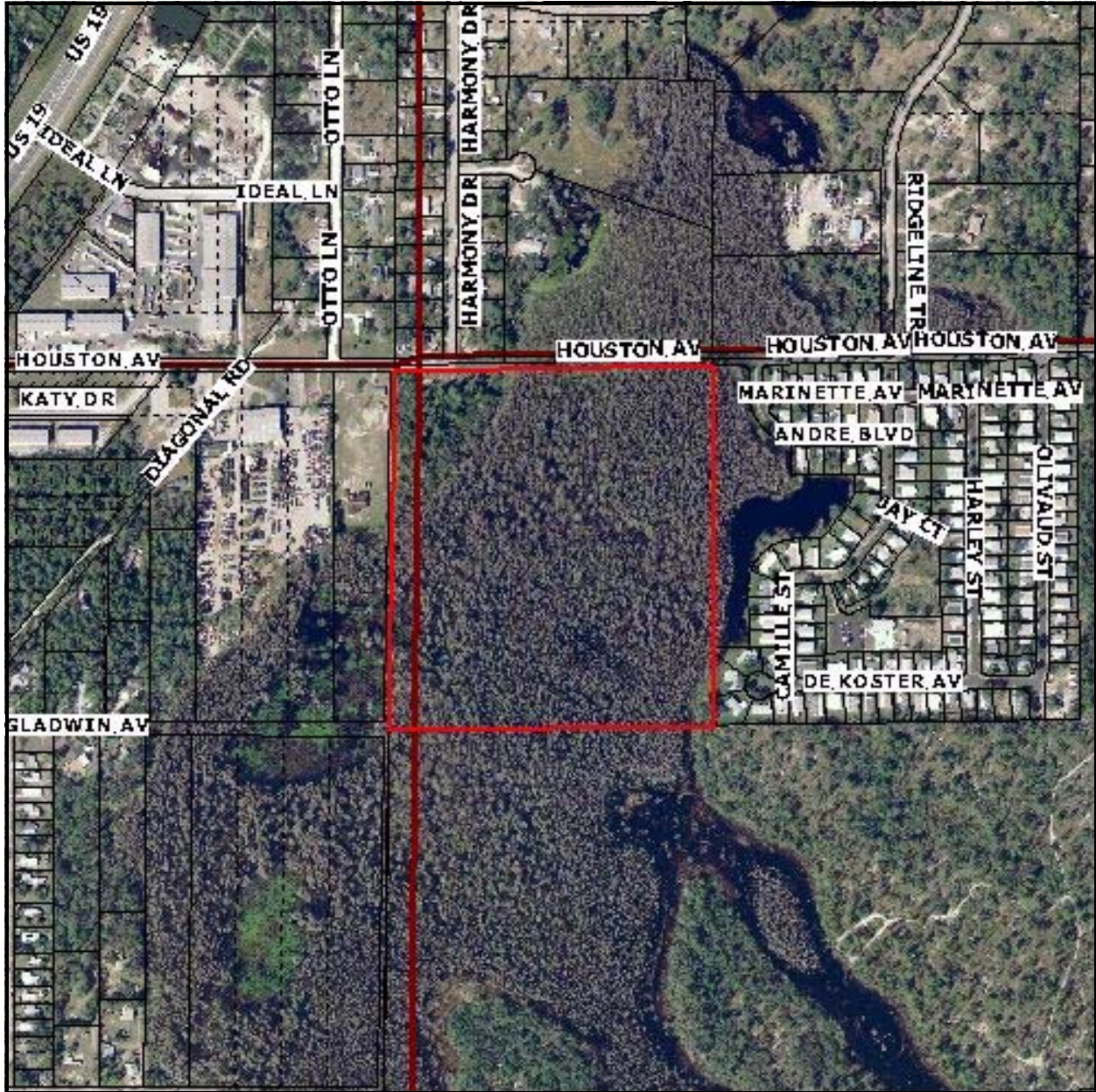


6328 US Hwy 19  
New Port Richey  
Florida 34652

*Established 1924*

727-849-2424 office \* 727-842-6596 fax \* [www.figrey.com](http://www.figrey.com)

# Aerial Map



Please note that the red border lines are approximate and subject to an accurate survey.

The information given herewith is obtained from sources we consider reliable. We are not responsible for misstatements of facts, errors, omissions, changes in terms or conditions, or withdrawal from the market without prior notice.

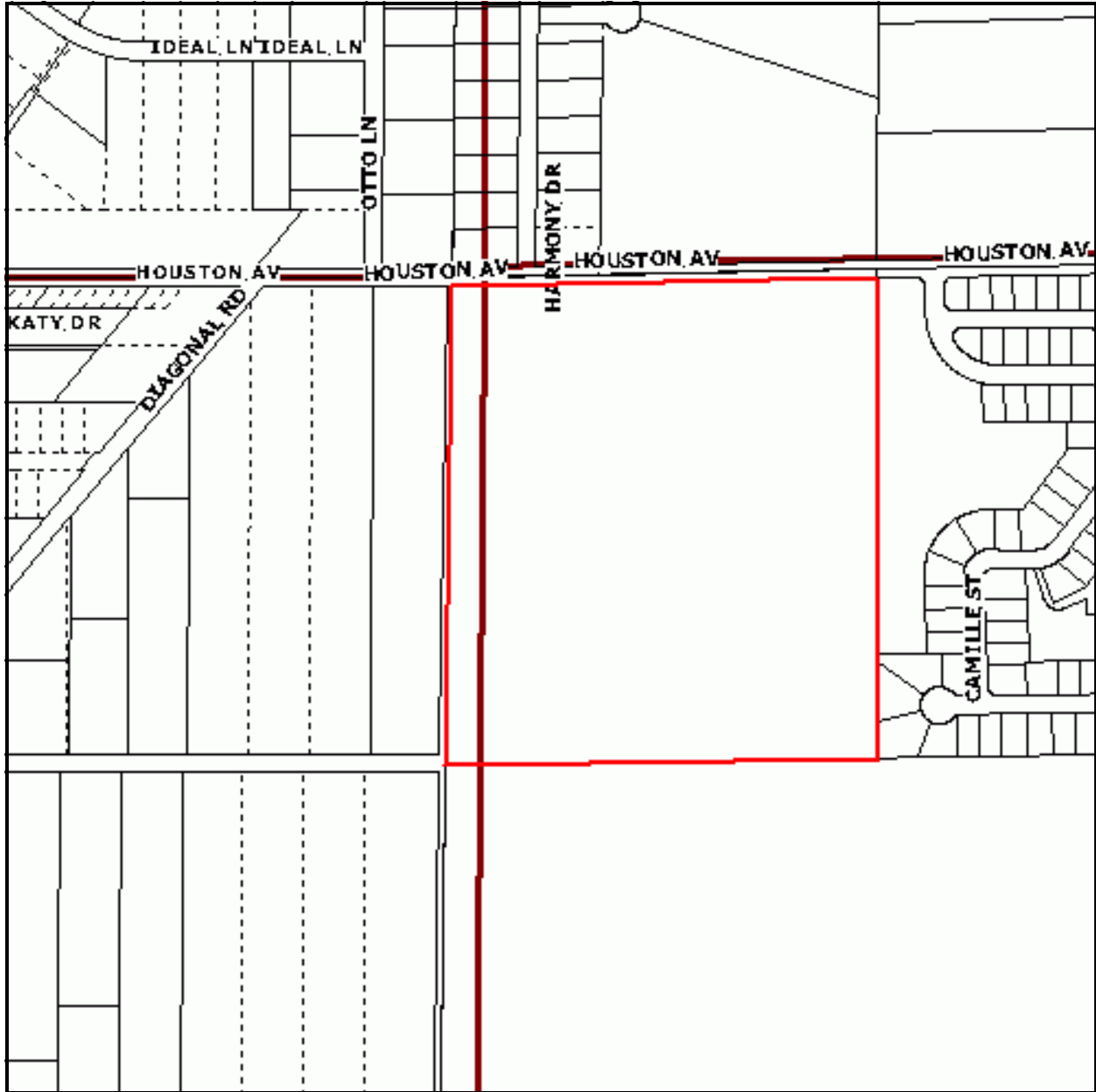


6328 US Hwy 19  
New Port Richey  
Florida 34652

*Established 1924*

727-849-2424 office \* 727-842-6596 fax \* [www.figrey.com](http://www.figrey.com)

# Plat Map



Please note all dimensions are approximate and subject to an accurate survey.

The information given herewith is obtained from sources we consider reliable. We are not responsible for misstatements of facts, errors, omissions, changes in terms or conditions, or withdrawal from the market without prior notice.

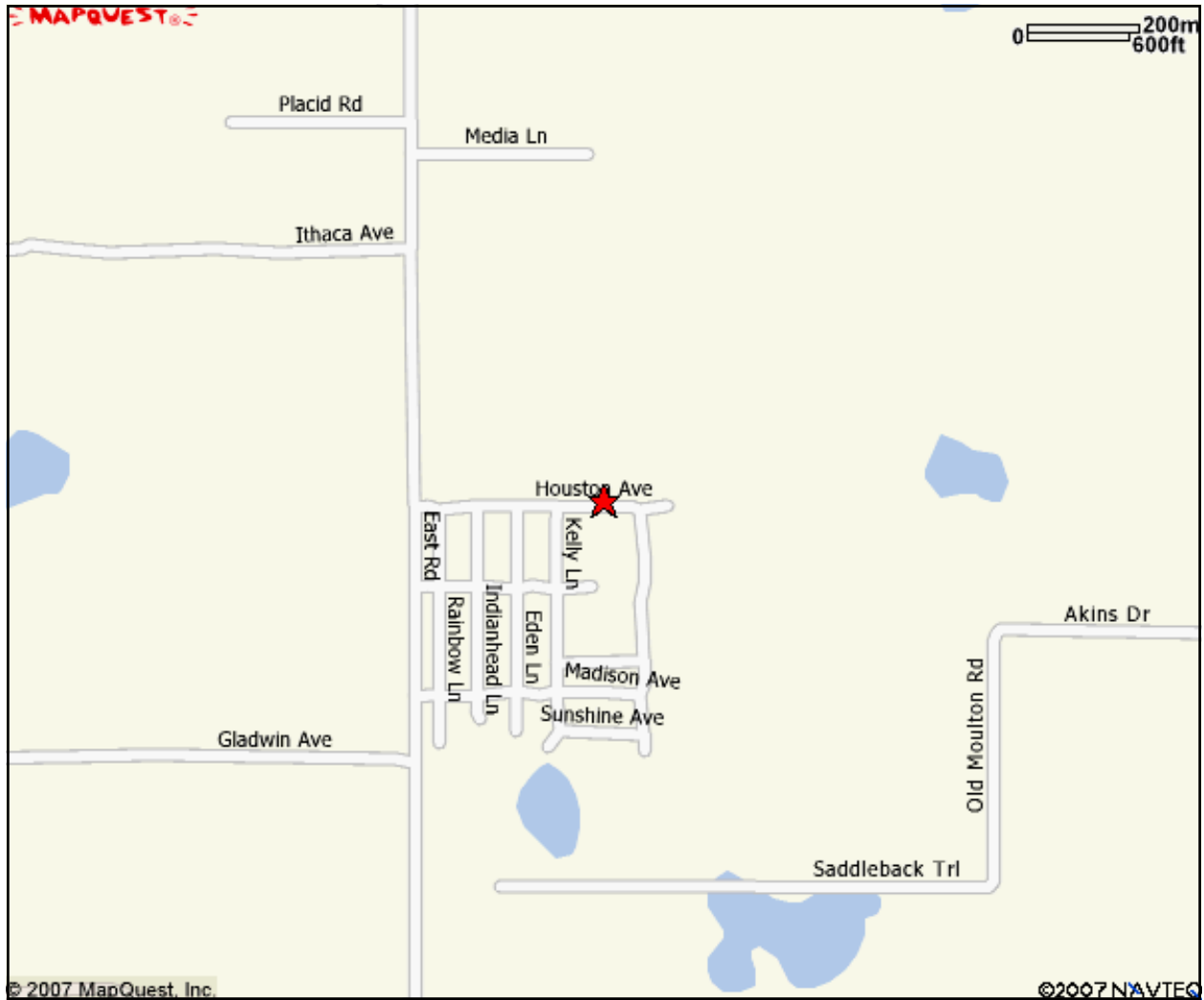


6328 US Hwy 19  
New Port Richey  
Florida 34652

*Established 1924*

727-849-2424 office \* 727-842-6596 fax \* [www.figrey.com](http://www.figrey.com)

# Location Map



The information given herewith is obtained from sources we consider reliable. We are not responsible for misstatements of facts, errors, omissions, changes in terms or conditions, or withdrawal from the market without prior notice.



6328 US Hwy 19  
New Port Richey  
Florida 34652

*Established 1924*

727-849-2424 office \* 727-842-6596 fax \* [www.figrey.com](http://www.figrey.com)