

# Vacant Commercial Property

Purchase Price	:	\$750,000.00
Location	:	7724 & 7801 James Clark Street, Port Richey, FL 34668
Land Size	:	42,253 Sq Ft (±)
Dimensions	:	Irregular 2 Lots
Zoning / Land Use	:	C-2 / R/OS
Taxes	:	\$8,226 for 2008

## Comments

Two parcels, one on the water (river) with great access to the Gulf. Second Parcel has 66 feet of frontage on US Highway 19. Great development site for any retail business.

For all inquires please contact:

**Dennis Gallagher**

(727)849-2424

The information given herewith is obtained from sources we consider reliable. We are not responsible for misstatements of facts, errors, omissions, changes in terms or conditions, or withdrawal from the market without prior notice.



6328 US Hwy 19  
New Port Richey  
Florida 34652

*Established 1924*

727-849-2424 office \* 727-842-6596 fax \* [www.figrey.com](http://www.figrey.com)

# Aerial Map



Please note that the red border lines are approximate and subject to an accurate survey.

The information given herewith is obtained from sources we consider reliable. We are not responsible for misstatements of facts, errors, omissions, changes in terms or conditions, or withdrawal from the market without prior notice.

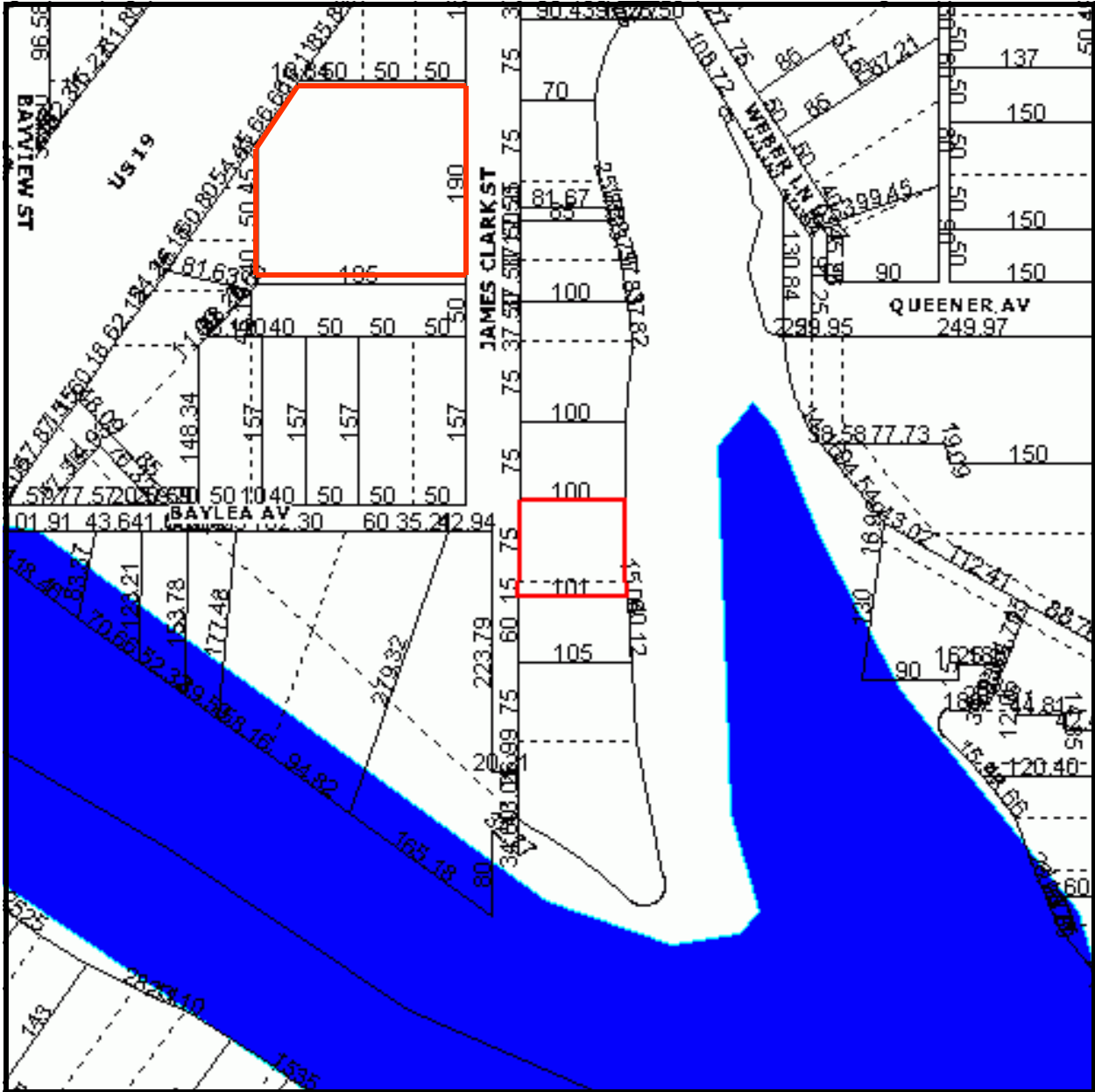


6328 US Hwy 19  
New Port Richey  
Florida 34652

*Established 1924*

727-849-2424 office \* 727-842-6596 fax \* [www.figrey.com](http://www.figrey.com)

# Plat Map



Please note all dimensions are approximate and subject to an accurate survey.

The information given herewith is obtained from sources we consider reliable. We are not responsible for misstatements of facts, errors, omissions, changes in terms or conditions, or withdrawal from the market without prior notice.

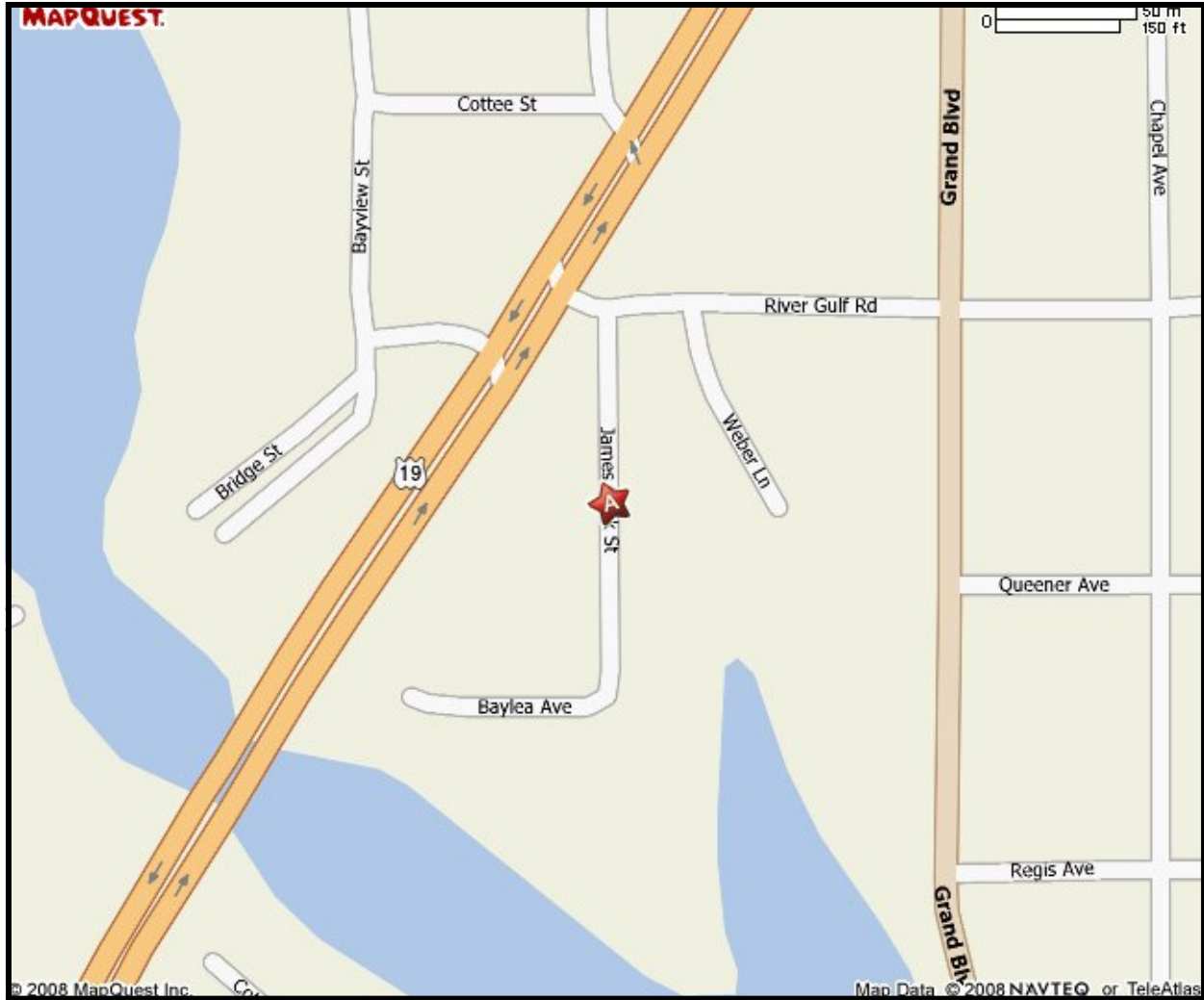


6328 US Hwy 19  
New Port Richey  
Florida 34652

*Established 1924*

727-849-2424 office \* 727-842-6596 fax \* [www.figrey.com](http://www.figrey.com)

# Location Map



The information given herewith is obtained from sources we consider reliable. We are not responsible for misstatements of facts, errors, omissions, changes in terms or conditions, or withdrawal from the market without prior notice.



6328 US Hwy 19  
New Port Richey  
Florida 34652

*Established 1924*

727-849-2424 office \* 727-842-6596 fax \* [www.figrey.com](http://www.figrey.com)