

For Sale Office/Warehouse

Location	:	233—12th Street, SW Largo, Pinellas County, FL
Land Size	:	101' X 118' / 11,918 sq ft ±
Building Size	:	32.2' X 81' / 2,608 sq ft ± (office 480' sq ft)
Zoning/ Land Use (Proposed)	:	Medical Arts Character District
Utilities	:	Sewer—City of Largo / Water—Pinellas County

Comments

In view of the proposed zoning / land use change, which may be final November 2009. The property is in very close proximity to:

- Diagnostic Clinic
- Eye Institute of West Florida
- Largo Medical Center

Purchase Price : **\$775,000.00**

For all inquires please contact:

Dan Jordan, CCIM

(727)480-0998

The information given herewith is obtained from sources we consider reliable. We are not responsible for misstatements of facts, errors, omissions, changes in terms or conditions, or withdrawal from the market without prior notice.

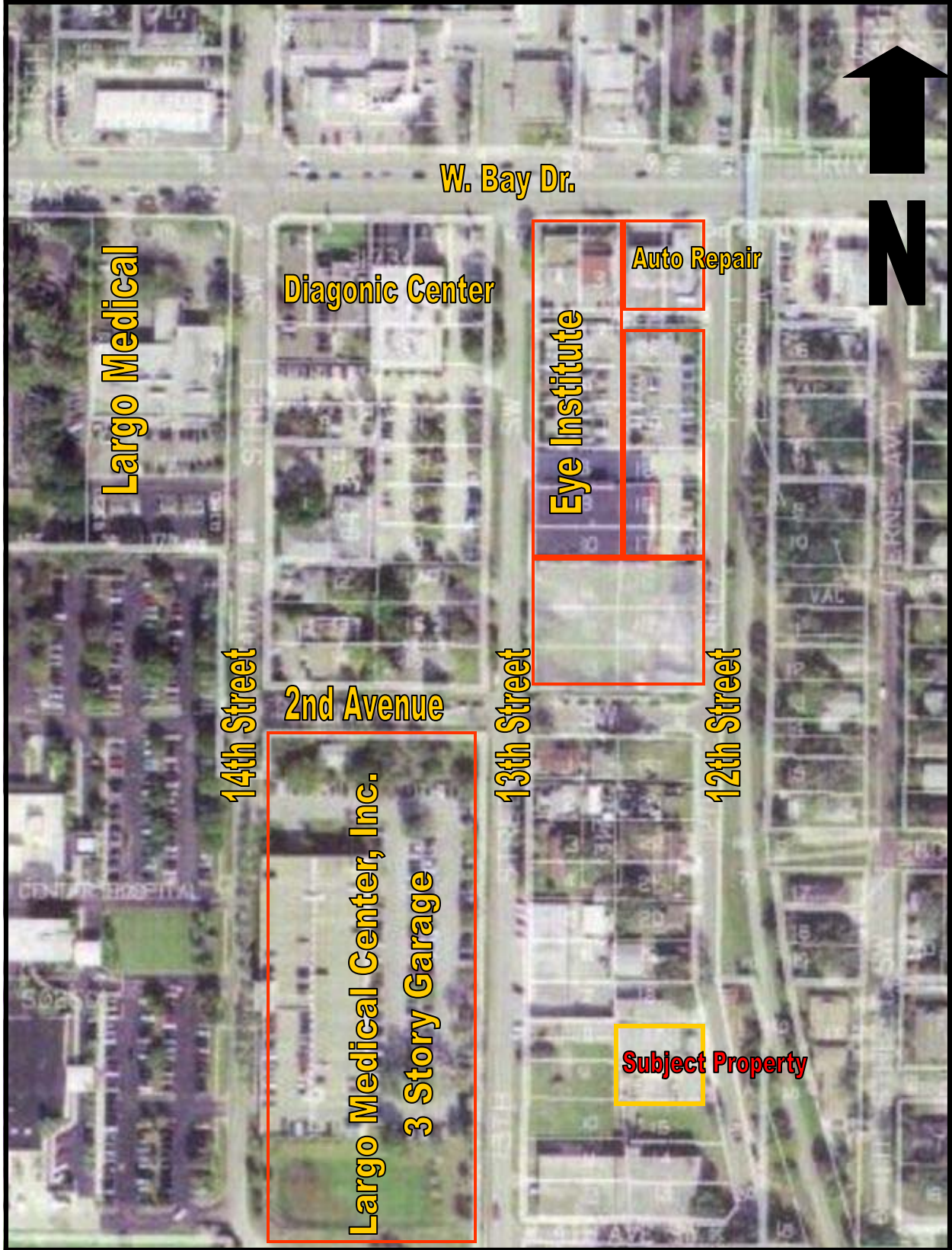


6328 US Hwy 19
New Port Richey
Florida 34652

Established 1924

727-849-2424 office * 727-842-6596 fax * www.figrey.com

Aerial Map



Area Map

